



WORLD TRADING INSTITUTE
WHERE SMART TRADING BEGINS

August

Start Date:

Monday August 3rd 2015

Education:

Stock Market Trading & Investing (Equities Course)

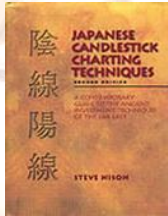
Course Time:

Monday-Friday 9am-4pm EST (Live Trading) 56 Hours

Program Tuition:

\$999.99 (Maximum Seating 15)

Reading Materials:



Japanese Candlestick Charting Techniques, 2nd Edition

By: Nison, Steve; Nison, Nison

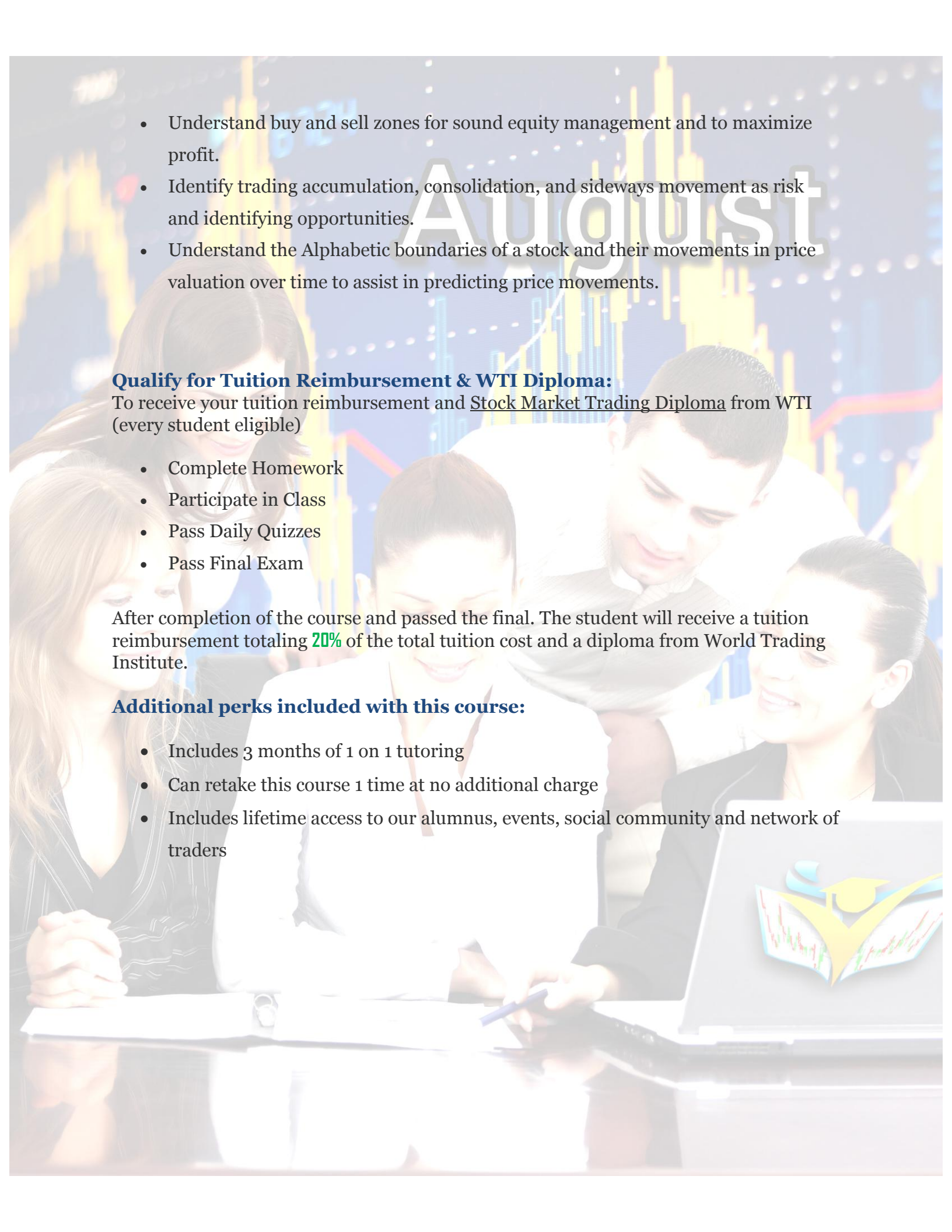
List Price \$100 (Included, Shipped & Delivered)

Course Objectives:

Upon successful completion of the course, the student will be able to:

- Understand the stock market as a whole, day to day trades and long term investments.
- Identify and execute technical trading strategies based on the formation of various Japanese candlestick formations.
- Interpret the meaning of economic and technical indicators on multiple timeframes.
- Calculate the levels of support and resistance in a trade to manage risk and maximize profit.
- Assess and implement effective equity management strategies.
- Interpret stocks and market trends that impact price and effectively draw trend lines and counter trend lines on a chart.



- 
- # August
- Understand buy and sell zones for sound equity management and to maximize profit.
 - Identify trading accumulation, consolidation, and sideways movement as risk and identifying opportunities.
 - Understand the Alphabetic boundaries of a stock and their movements in price valuation over time to assist in predicting price movements.

Qualify for Tuition Reimbursement & WTI Diploma:

To receive your tuition reimbursement and Stock Market Trading Diploma from WTI (every student eligible)

- Complete Homework
- Participate in Class
- Pass Daily Quizzes
- Pass Final Exam

After completion of the course and passed the final. The student will receive a tuition reimbursement totaling **20%** of the total tuition cost and a diploma from World Trading Institute.

Additional perks included with this course:

- Includes 3 months of 1 on 1 tutoring
- Can retake this course 1 time at no additional charge
- Includes lifetime access to our alumnus, events, social community and network of traders